

**TECHNICAL MANUAL**

**ORGANIZATIONAL, DIRECT SUPPORT,  
AND GENERAL SUPPORT MAINTENANCE  
REPAIR PARTS AND SPECIAL TOOLS LIST  
FOR  
TEST FACILITIES SET AN/TPM-24(V)4  
(NSN 6625-01-086-51921**

---

**HEADQUARTERS, DEPARTMENT OF THE ARMY**

**26 JULY 1984**

ORGANIZATIONAL, DIRECT SUPPORT, AND GENERAL SUPPORT MAINTENANCE  
REPAIR PARTS AND SPECIAL TOOLS LIST  
FOR  
TEST FACILITIES SET AN/TPM-24(V)4  
(NSN 6625-01-086-5192)  
Current as of 20 June 1984

**REPORTING ERRORS AND RECOMMENDING IMPROVEMENTS**

You can help improve this manual. If you find any mistakes or if you know of a way to improve the procedures, please let us know. Mail your letter, DA Form 2028 (Recommended Changes to Publications and Blank Forms), or DA Form 2028-2 located in the back of this manual direct to Commander, US Army Communication Electronics Command and Fort Monmouth, ATTN: DRSELME-MP, Fort Monmouth, NJ 07703-5007.

In either case, a reply will furnished direct to you.

**Table of Contents**

		Page	Illus Figure
Section	I. Introduction .....	1	
	II. Repair Parts List .....	5	
Group	00 Test Facilities Set AN/TPM-24(V)4 Unit 1 .....	5	1
	01 Case, Test Facilities Set CY-8015/TPM-24(V) (1A1) (No parts authorized) .		
	02 Hybrid Attenuator Assembly CN-1322A/TPM-24(V) (1A1A1) .....	7	2
	03 Extender Card, Electronic Test MX-9356/TPM-24(V) (1A1A4) .....	11	3
	04 Cable Assembly, Power, Electrical (10 Ft) (1A1W1) .....	13	4
	05 Cable Assembly, Power Electrical (10 Ft) (1A1W2) .....	15	5
	06 Cable Assembly, Radio Frequency (6 Ft) CG-3750/TPM-24(V) (1A1W3, 1A1W3, 1A1W4).	17	6
	07 Cable Assembly, Radio Frequency (8 Ft) 1A1W5) .....	19	7
	08 Cable Assembly, Radio Frequency (3 Ft) CG-3754/TPM-24(V) (1A1W6, 1A1W7, 1A1W8)	21	8
	09 Cable Assembly, Radio Frequency (33.60 In.) (1A1W9) .....	23	9
	10 Cable Assembly, Radio Frequency (34.58 In.) (1A1W10) .....	25	10
	11 Case, Accessories CY-8014/TPM-24(V) (1A1A2).....	27	11
	1101 Cable Assembly, Special Purpose, Electrical (2 Ft) CX-12916/TPM-24(V) (1A1A2W1, 1A1A2W2, 1A1A2W3).....	29	12
Section	III. Special Tools List (Not applicable) .		
	IV. National Stock Number and Part Number Index .....	30	

\*This manual supersedes TM 11-6625-2398-24P-4, 5 February 1981.

SECTION I

INTRODUCTION

1-1. Scope

This manual lists spares and repair parts; special tools; special test, measurement, and diagnostic equipment (TMDE), and other special support equipment required for performance of organizational, direct support, and general support maintenance of the AN/TPM-24(V)4. It authorizes the requisitioning and issue of spares and repair parts as indicated by the source and maintenance codes.

2. General

This Repair Parts and Special Tools List is divided into the following sections:

a. *Section II. Repair Parts List.* A list of spares and repair parts authorized for use in the performance of maintenance. The list also includes parts which must be removed for replacement of the authorized parts. Parts lists are composed of functional groups in numeric sequence, with the parts in each group listed in figure and item number sequence.

b. *Section III. Special Tools List.* Not applicable.

c. *Section IV. National Stock Number and Part Number Index.* A list, in National item identification number (NIIN) sequence, of all National stock numbers (NSN) appearing in the listings, followed by a list, in alphanumeric sequence, of all part numbers appearing in the listings. National stock numbers and part numbers are cross-referenced to each illustration figure and item number appearance.

3. Explanation of Columns

a. *Illustration.* This column is divided as follows:

(1) *Figure number.* Indicates the figure number of the illustration on which the item is shown.

(2) *Item number.* The number used to identify item called out in the illustration.

b. *Source, Maintenance, and Recoverability (SMR) Codes.*

(1) *Source code.* Source codes indicate the manner of acquiring support items for maintenance, repair, or overhaul of end items. Source codes are entered in the first and second positions of the Uniform SMR Code format as follows:

<i>Cod</i>	<i>Definition</i>
------------	-------------------

PA — Item procured and stocked for anticipated or known usage.

PB — Item procured and stocked for insurance purpose because essentiality dictates that a minimum quantity be available in the supply system.

PC — Item procured and stocked and which otherwise would be coded PA except that it is deteriorative in nature.

PD — Support item, excluding support equipment, procured for initial issue or outfitting and stocked only for subsequent or additional initial issues or outfittings. Not subject to automatic replenishment.

PE — Support equipment procured and stocked for initial issue or outfitting to specified maintenance repair activities.

PF — Support equipment which will not be stocked but which will be centrally procured on demand.

PG — Item procured and stocked to provide for sustained support for the life of the equipment. It is applied to an item peculiar to the equipment which, because of probable discontinuance or shutdown of production facilities, would prove uneconomical to reproduce at a later time.

KD — An item of a depot overhaul/repair kit and not purchased separately. Depot kit defined as a kit that provides items required at the time of overhaul or repair.

KF — An item of a maintenance kit and not purchased separately. Maintenance Kit defined as a kit that provides an item that can be replaced at organizational or intermediate levels of maintenance.

KB — Item included in both a depot overhaul/repair kit and a maintenance kit.

MO — Item to be manufactured or fabricated at organizational level.

MF — Item to be manufactured or fabricated at the direct support maintenance level.

MH — Item to be manufactured or fabricated at the general support maintenance level.

MD — Item to be manufactured or fabricated at the depot maintenance level.

AO — Item to be assembled at organizational level.

AF — Item to be assembled at direct support maintenance level.

AH — Item to be assembled at general support maintenance level.

AD — Item to be assembled at depot maintenance level.

XA — Item is not procured or stocked because the requirements for the item will result in the replacement of the next higher assembly.

XB — Item is not procured or stocked. If not available through salvage, requisition.

XC — Installation drawing, diagram, instruction sheet, field service drawing, that is identified by manufacturer's part number.

XD — A support item that is not stocked. When required, item will be procured through normal supply channels.

NOTE

**Cannibalization or salvage may be used as a**

source of supply for any items source coded above except those coded XA and aircraft support items as restricted by AR 750-1.

(2) *Maintenance code.* Maintenance codes are assigned to indicate the levels of maintenance authorized to USE and REPAIR support items. The maintenance codes are entered in the third and fourth positions of the Uniform SMR Code format as follows:

(a) The maintenance code entered in the third position will indicate the lowest maintenance level authorized to remove, replace, and use the support item. The maintenance code entered in the third position will indicate one of the following levels of maintenance:

- | <i>Code</i> | <i>Application/ Explanation</i>  |
|-------------|--|
| C           | Crew or operator maintenance performed within organizational maintenance.                                |
| O           | Support item is removed, replaced, used at the organizational level.                                     |
| F           | Support item is removed, replaced, used at the direct support level.                                     |
| H           | Support item is removed, replaced, used at the general support level.                                    |
| D           | Support items that are removed, replaced, used at depot, mobile depot, specialized repair activity only. |

(b) The maintenance code entered in the fourth position indicates whether the item is to be repaired and identifies the lowest maintenance level with the capability to perform complete repair (i.e., all authorized maintenance functions). This position will contain one of the following maintenance codes:

- | <i>Code</i> | <i>Application/ Explanation</i>   |
|-------------|---|
| O           | The lowest maintenance level capable of complete repair of the support item is the organizational level.  |
| F           | The lowest maintenance level capable of complete repair of the support item is the direct support level.  |
| H           | The lowest maintenance level capable of complete repair of the support item is the general support level.   |
| D           | The lowest maintenance level capable of complete repair of the support item is the depot level.   |
| L           | Repair restricted to designated specialized repair activity.  |
| Z           | Nonreparable. No repair is authorized.  |
| B           | No repair is authorized. The item may be reconditioned by adjusting, lubricating, etc., at the user level. No parts or special tools are procured for the maintenance of this item. |

(3) *Recoverability code.* Recoverability codes are assigned to support items to indicate the disposition action on unserviceable items. The recoverability code is entered in the fifth position of the Uniform SMR Code format as follows:

- | <i>Codes</i> | <i>Recoverability Definition</i>   |
|--------------|--|
| Z            | Nonreparable item. When unserviceable, condemn and dispose at the level indicated in position 3. |

- O — Repairable item. When uneconomically repairable, condemn and dispose at organizational level.
- F — Repairable item. When uneconomically repairable, condemn and dispose at the direct support level.
- H — Repairable item. When uneconomically repairable, condemn and dispose at the general support level.
- D — Repairable item. When beyond lower level repair capability, return to depot. Condemnation and disposal not authorized below depot level.
- L — Repairable item. Repair, condemnation, and disposal not authorized below depot/ specialized repair activity level.
- A — Item requires special handling or condemnation procedures because of specific reasons (i.e., precious metal content, high dollar value, critical material or hazardous material). Refer to appropriate manuals/ directives for specific instructions.

*c. National Stock Number.* Indicates the National stock number assigned to the item and will be used for requisitioning purposes.

*d. Federal Supply Code for Manufacturer (FSCM).* The FSCM is a 5-digit numeric code listed in SB 708-41/42 which is used to identify the manufacturer, distributor, or Government agency, etc.

*e. Part Number.* Indicates the primary number used by the manufacturer (individual, company, firm, corporation, or Government activity), which controls the design and characteristics of the item by means of its engineering drawings, specifications, standards, and inspection requirements to identify an item or range of items.

**NOTE**

**When a stock numbered item is requisitioned. The repair part received may have a different part number than the part being replaced.**

*f. Description.* Indicates the Federal item name and, if required, a minimum description to identify the item.

*g. Unit of Measure (U/M).* Indicates the standard of the basic quantity of the listed item as used in performing the actual maintenance function. This measure is expressed by a two-character alphabetical abbreviation (e.g., ea, in, pr, etc.). When the unit of measure differs from the unit of issue, the lowest unit of issue that will satisfy the required units of measure will be requisitioned.

*h. Quantity Incorporated in Unit.* Indicates the quantity of the item used in the breakout shown on the illustration figure, which is prepared for a functional group, sub-functional group, or an assembly.

**4. Special Information**

*a.* The following publications pertain to the AN/TPM-24(V)4 and its components:  
 TM 11-6625-2398-14-4, Test Facilities Set AN/TPM-24(V)4

*b.* National stock numbers (NSN's) that are missing from P source coded items have been applied for and will

be added to this TM by future change/ revision when they are entered in the Army Master Data File (AMDF). Until the NSN's are established and published, submit exception requisitions to: Commander, US Army Communications-Electronics Command and Fort Monmouth, ATTN:DRSEL-MM, Fort Monmouth, NJ 07703-5007 for the past required to support your equipment.

**5. How to Locate Repair Parts**

a. When National stock number or part number is unknown.

(1) *First.* Using the table of contents, determine the functional group within which the item belongs. This is necessary since illustrations are prepared for functional groups and listings are divided into the same groups.

(2) *Second.* Find the illustration covering the functional group to which the item belongs.

(3) *Third.* Identify the item on the illustration and note the illustration figure and item number of the item.

(4) *Fourth.* Using the Repair Parts Listing, find the figure and item number noted on the illustration.

b. When National stock number or part number is known.

(1) *First.* Using the Index of National Stock Numbers and Part Numbers, find the pertinent National stock number or part number. This index is in NIIN sequence followed by a list of part numbers in alphanumeric sequence, cross-referenced to the illustration figure number and item number.

(2) *Second.* After finding the figure and item number, locate the figure and item number in the repair parts list.

**6. Abbreviations**

Not applicable.

**(Next printed page is 4)**

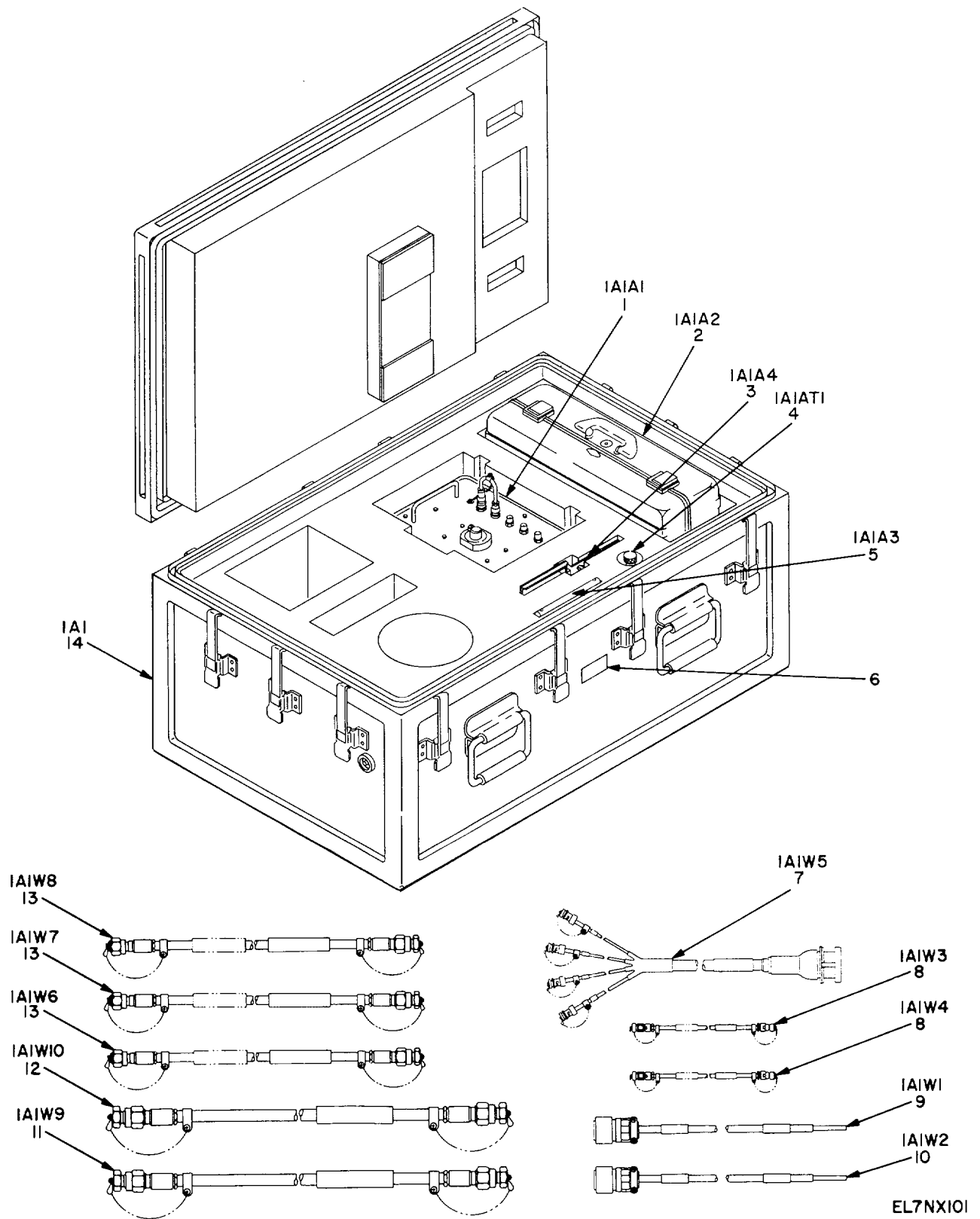
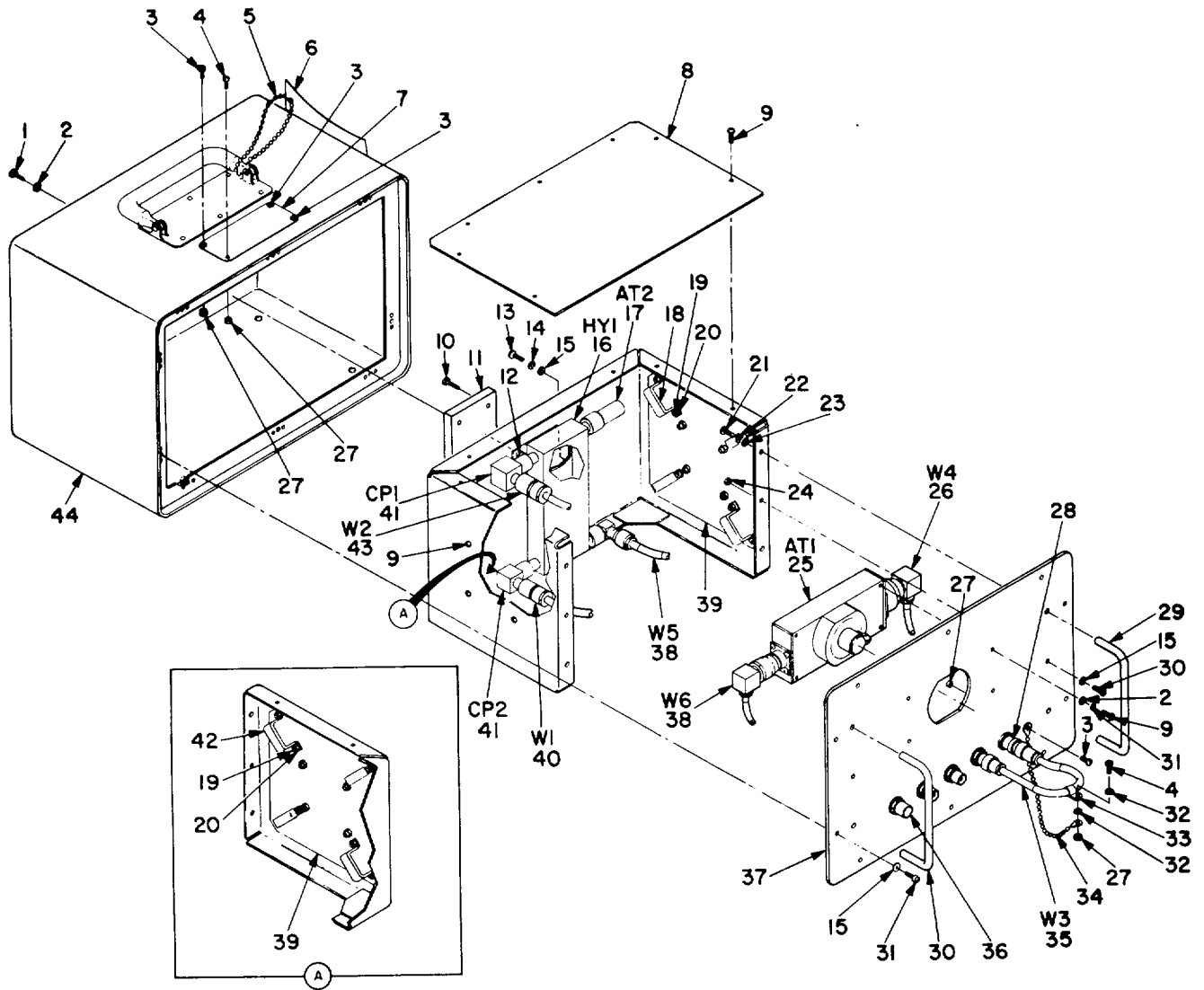


Figure 1. Test Facilities Set AN/TPM-24(V)4-Unit 1 and Case,  
Test Facilities Set CY-8015/TPM-24(V)-1A1

SECTION II

TM 11-6625-2398-24P-4

(1) ILLUSTRATION		(2)	(3)	(4)	(5)	(6) DESCRIPTION	(7)	(8) QTY INC IN
(a) FIG NO.	(b) ITEM NO.	SMR CODE	NATIONAL STOCK NUMBER	FSCM	PART NUMBER	USABLE ON CODE	UNIT	
						GROUP 00 TEST FACILITIES SET		
						00 AN/TPM-24(V) 4 UNIT 1		
1	1	PAOHH	5985-01-069-9911	80058	CN-322A/TPM-24(V)	ATTENUATOR ASSEMBLY.....	EA	1
1		XBOHH		80063	SM-D-986521	CASE.ACCESSORIES.....	EA	1
1	3	PAOHH	6625-00-006-9732	80058	MX-9356/TPM-24(V)	EXTENDER CARD,ELECT.....	EA	1
1	4	PADZZ	6625-00-006-7692	80058	DA-636/U	DUMMY LOAD,ELECTRIC.....	EA	1
1	5	PAOZZ	5999-01-124-9697	80058	MX-10412/TPM-24(V)	EXTRACTOR,ELECTRIC.....	EA	1
1	6	XBDZZ		80063	SM-D-604428-8	PLATE,IDENT.....	EA	1
1	7	PAOHH	5995-01-152-0502	80063	SM-D-986522	CABLE ASSEMBLY,RADI.....	EA	1
1	8	PAOHH	5995-01-063-7188	80058	CG-3750/TPM-24(V) (6FT 0IN)	CABLE ASSEMBLY,RADI.....	EA	2
1	9	PADHH	5995-01-152-0497	80063	SM-D-787808	CABLE ASSEMBLY, POWE.....	EA	1
1	10	PADHH	5995-31-152-0498	80063	SM-D-787809	CABLE ASSEMBLY,POWE.....	EA	1
1	11	PAOHH	5995-01-155-4260	80063	SM-D-986535	CABLE ASSEMBLY RF.....	EA	1
1	12	PAOHH	5995-01-155-4259	80063	SM-D-986536	CABLE ASSEMBLY RF.....	EA	1
1	13	PAOHH	5995-01-062-7921	80058	CG-3754/TPM-24(V) (3FT DIN)	CABLE ASSEMBLY.RADI.....	EA	3
1	14	XBOZZ		80058	CY-8015/TPM-24(V)	CASE,TEST FACIL SET.....	EA	1
<b>5</b>								



NOTE:  
PREFIX REFERENCE DESIGNATIONS WITH 1A1A1.

EL7NX102

Figure 2. Hybrid Attenuator Assembly CN-1322A/TPM-24(V)-1A1A1



## SECTION II

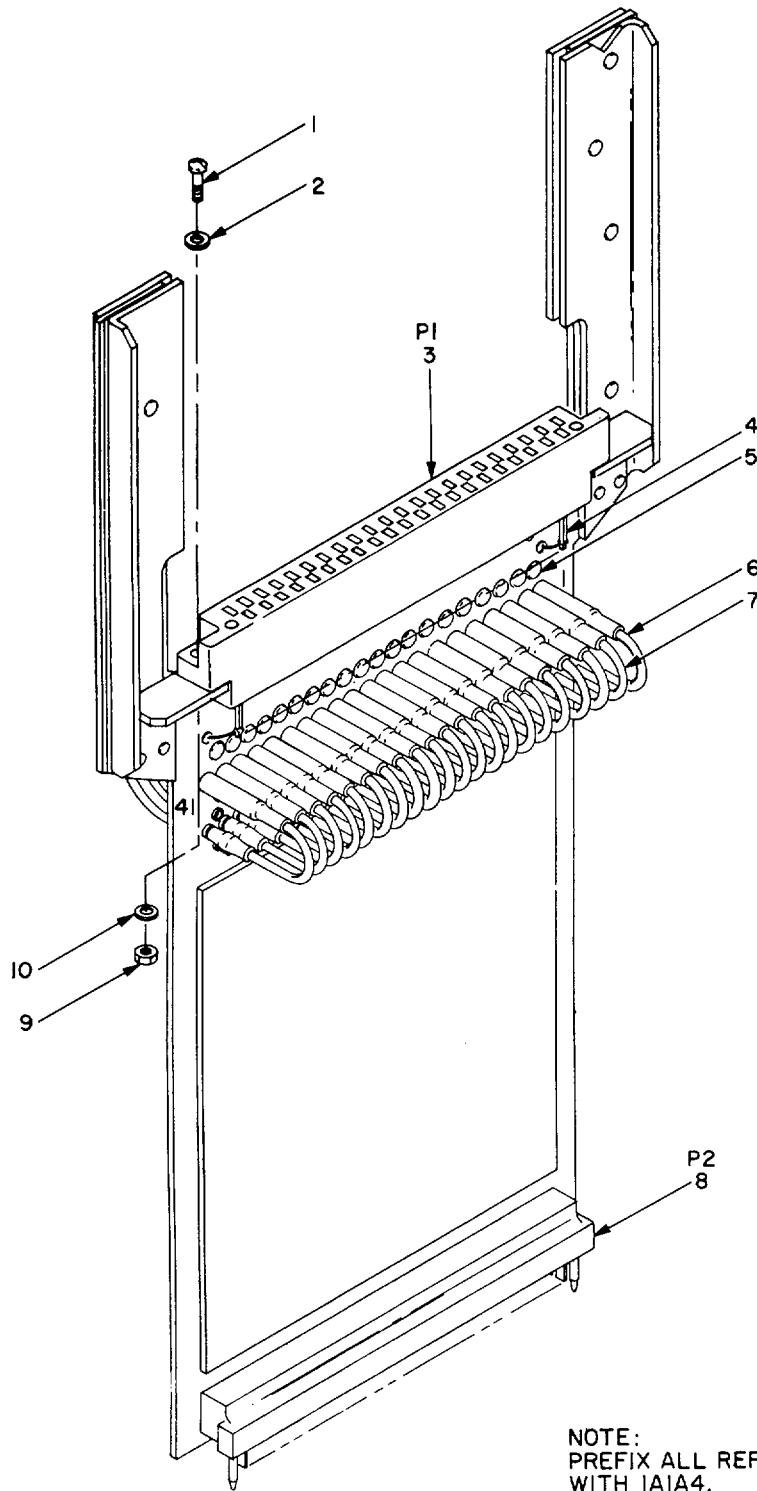
TM 11-6625-2398-24P-4

(1) ILLUSTRATION		(2)	(3)	(4)	(5)	(6)	(7)	(8)
(a) FIG NO.	(b) ITEM NO.	SMR CODE	NATIONAL STOCK NUMBER	FSCM	PART NUMBER	DESCRIPTION  USABLE ON CODE	UNIT	QTY INC IN
						GROUP 02 HYBRID ATTENUATOR		
						ASSEMBLY CN-1322A/TPM- 24(V)-1A1A1		
2	1	PAHZZ	5305-00-054-6656	96906	MS51957-32	SCREW, MACHINE .....	EA	2
2	2	PAHZZ	5310-00-531-9514	81352	AN960C6	WASHER,FLAT.....	EA	6
2	3	PAHZZ	5305-00-054-5649	96906	MS51957-15	SCREW, MACHINE .....	EA	4
2	4	PAHZZ	5305-00-054-5650	96906	MS51957-16	SCREW, MACHINE .....	EA	2
2	5	PAHZZ	4010-01-114-0010	80205	NAS1201C6C24	CHAIN ASSEMBLY,SING .....	EA	1
2	6	XBHZZ		80063	SM-C-604305	CHART, CALIBRATION .....	EA	1
2	7	XBHZZ		80063	SM-D-604428-2	PLATE, IDENT .....	EA	1
2	8	XBHZZ		80063	SM-C-687969	COVER, ATTENUATOR .....	EA	1
2	9	PAHZZ	5305-00-054-6652	96906	MS51957-28	SCREW, MACHINE .....	EA	19
2	10	PAHZZ	5305-00-054-6654	96906	MS51957-30	SCREW, MACHINE .....	EA	2
2	11	X8HZZ		80063	SM-B-604501	SPACER.....	EA	1
2	12	XBHZZ		80063	SM-C-688016	BRACKET, CPLR.....	EA	1
2	13	PAHZZ	5305-00-054-6674	96906	MS51957-49	SCREW, MACHINE .....	EA	4
2	14	PAHZZ	5310-00-933-8119	96906	MS35338-137	WASHER,LOCK.....	EA	4
2	15	PAHZZ	5310-00-685-3744	88044	AN960C8	WASHER,FLAT.....	EA	16
2	16	PAHZZ	5985-00-856-3283	80249	330764	COUPLER, DIRECTIONAL.....	EA	1
2	17	PAHZZ	5985-00-893-1773	99899	3708NM	DUMMY LOAD, ELECTRIC .....	EA	1
2	18	PAHZZ	5340-01-164-2407	84971	TA514-0-12-12	STRAP RETAINING.....	EA	4
2	19	PAHZZ	5305-00-958-2918	96906	MS24693-C26	SCREW, MACHINE .....	EA	16
2	20	PAHZZ	5310-00-982-6813	96906	MS21044C06	NUT,SELF-LOCKING, HE.....	EA	16
2	21	PAHZZ	5305-00-054-6670	96906	MS51957-45	SCREW,MACHINE .....	EA	4
2	22	PAHZZ	5310-00-933-8120	96906	MS35338-138	WASHER, LOCK.....	EA	4
2	23	PAHZZ	5310-00-167-0801	88044	AN960C10	WASHER, FLAT.....	EA	4
2	24	PAHZZ	5310-00-982-6814	96906	MS21044C08	NUT,SELF-LOCKING, HE.....	EA	2
2	25	XAHZZ		12457	AU-46ANC1	ATTENUATOR, VARIALE.....	EA	1
2	26	PAHZZ	5995-01-158-9295	80063	SM-C-688013	CABLE ASSEMBLY RADI.....	EA	1
2	27	PAHZZ	5313-00-982-4999	96906	MS21044C04	NUT ,SELF-LOCKING, HE.....	EA	6
2	28	PAHZZ		81349	UG-606/U	ADAPTER, CONNECTOR .....	EA	1
2	29	PAHZZ	5340-00-840-0954	96906	MS39087-4	HANDLE,BOG.....	EA	2
2	30	PAHZZ	5305-00-054-6670	96906	MS51957-45	SCREW, MACHINE .....	EA	12
2	31	PAHZZ	5310-00-929-6395	96906	MS35338-136	WASHER,LOCK.....	EA	4
2	32	PAHZZ	5310-00-782-1349	96906	MS15795-804	WASHER, FLAT.....	EA	2
2	33	PAHZZ	5340-00-003-9207	09922	HP-4N	CLAMP, LOOP.....	EA	1
2	34	XDHZZ		80205	NAS1201C6B16A	CHAIN,ASSEMBLY,SING .....	EA	1
2	35	PAHZZ	5995-00-235-5047	80058	CG409HU6IN	CABLE ASSEMBLY,RAOI.....	EA	1
2	36	PAHZZ	5935-01-033-9639	81349	M55339/04-00030	ADAPTER,CONNECTOR .....	EA	1

SECTION II

TM 11-6625-2398-24P-4

(1) ILLUSTRATION		(2)	(3)	(4)	(5)	(6) DESCRIPTION	(7)	(8) QTY INC IN
(a) FIG NO.	(b) ITEM NO.	SMR CODE	NATIONAL STOCK NUMBER	FSCM	PART NUMBER	USABLE ON CODE	UNIT	
2	37	XBHZZ		80063	SM-D-604303	PANEL, FRNT .....	EA	
2	38	XBHZZ		80063	SM-C-688010	CABLE ASSY,RF .....	EA	2
2	39	XBHZZ		80063	SM-C-687970	PLATE, ATTENUATOR.....	EA	2
2	40	PAHZZ	5995-01-157-1839	80063	SM-C-688011-1	CABLE ASSEMBLY RF.....	EA	1
2	41	PAHZZ	5935-00-904-4050	81349	M55339/03-00027	ADAPTER, CONNECTOR .....	EA	2
2	42	PAHZZ	5340-01-162-5886	84971	TA514-D-16-12	STRAP RETAINING.....	EA	4
2	43	PAHZZ	5995-01-157-1840	80063	SM-C-688011-2	CABLE ASSEMBLY RF.....	EA	1
2	44	XBHZZ		19178	M10990	CASE, ELEC EQPT CAB .....	EA	1
<b>8/(9 BLANK)</b>								



NOTE:  
PREFIX ALL REFERENCE DESIGNATIONS  
WITH 1A1A4.

Figure 3. Extender Card, Electronic Test MX-9356/TPM-24(V)-1A1A4

EL7NX103

SECTION II

TM 11-6625-2398-24P-4

(1) ILLUSTRATION		(2)	(3)	(4)	(5)	(6) DESCRIPTION	(7)	(8) QTY INC IN
(a) FIG NO.	(b) ITEM NO.	SMR CODE	NATIONAL STOCK NUMBER	FSCM	PART NUMBER	USABLE ON CODE	UNIT	
						GROUP 03 EXTENDER CARD, ELECTRONIC		
						TEST MX-9356/TPM-24(V) 1A1A4		
3	1	PAHZZ	5305-00-054-5652	96906	MS51957-18	SCREW, MACHINE .....	EA	2
3	2	PAHZZ	5310-00-057-0573	88769	91921002	WASHER, FLAT .....	EA	2
3	3	PAHZZ	5935-00-156-0253	81349	M21097/13-05	CONNECTOR, RECEPTAC.....	EA	1
3	4	PAHZZ	5935-00-173-4853	71279	450-3704-01-03	JACK, TIP.....	EA	82
3	5	PAHZZ	5999-01-158-9127	80063	SM-B-604425	CONTACT ELECTRICAL.....	EA	41
3	6	PAHZZ	6625-01-175-5130	80063	SM-B-604419	CABLE ASSEMBLY SP E WHITE.....	EA	21
3	7	PAHZZ	5995-01-157-1836	80063	SM-B-604421	CABLE ASSEMBLY SP E BLACK.....	EA	20
3	8	PAHZZ	5935-00-154-4000	81349	M21097/15-13	CONNECTOR, PLUG, ELEC .....	EA	1
3	9	PAHZZ	5310-00-934-9748	96906	M535649-244	NUT, PLAIN, HEXAGON.....	EA	2
3	10	PAHZZ	5310-00-933-8118	96906	MS35338-135	WASHER, LOCK.....	EA	2
<b>11</b>								

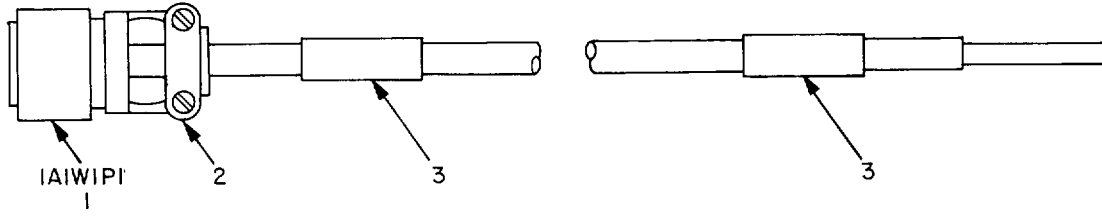


Figure 4. Cable Assembly, Power, Electrical (10 Ft)-1A1W1

EL7NX104

SECTION II

TM 11-6625-2398-24P-4

(1) ILLUSTRATION		(2)	(3)	(4)	(5)	(6) DESCRIPTION	(7)	(8) QTY INC IN
(a) FIG NO.	(b) ITEM NO.	SMR CODE	NATIONAL STOCK NUMBER	FSCM	PART NUMBER	USABLE ON CODE	UNIT	
						GROUP 04 CABLE ASSEMBLY,POWER, ELECTRICAL (10FT)-1A1W1		
4	1	PAHZZ	5935-00-477-8166	96906	MS2746E218115	CONNECTOR,PLUG, ELEC .....	EA	1
4	2	PAHZZ	5935-00-163-3652	96906	MS27506B20-2	CLAMP,CABLE, ELECTRI .....	EA	1
4	3	XBHZZ		80063	SM-A-788003-15	SLEEVE, MARKER, CASLE.....	EA	2
<b>13</b>								

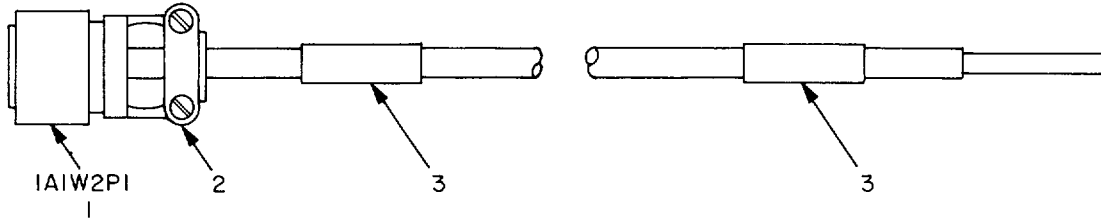


Figure 5. Cable Assembly, Power, Electrical (10 Ft) 1A1W2

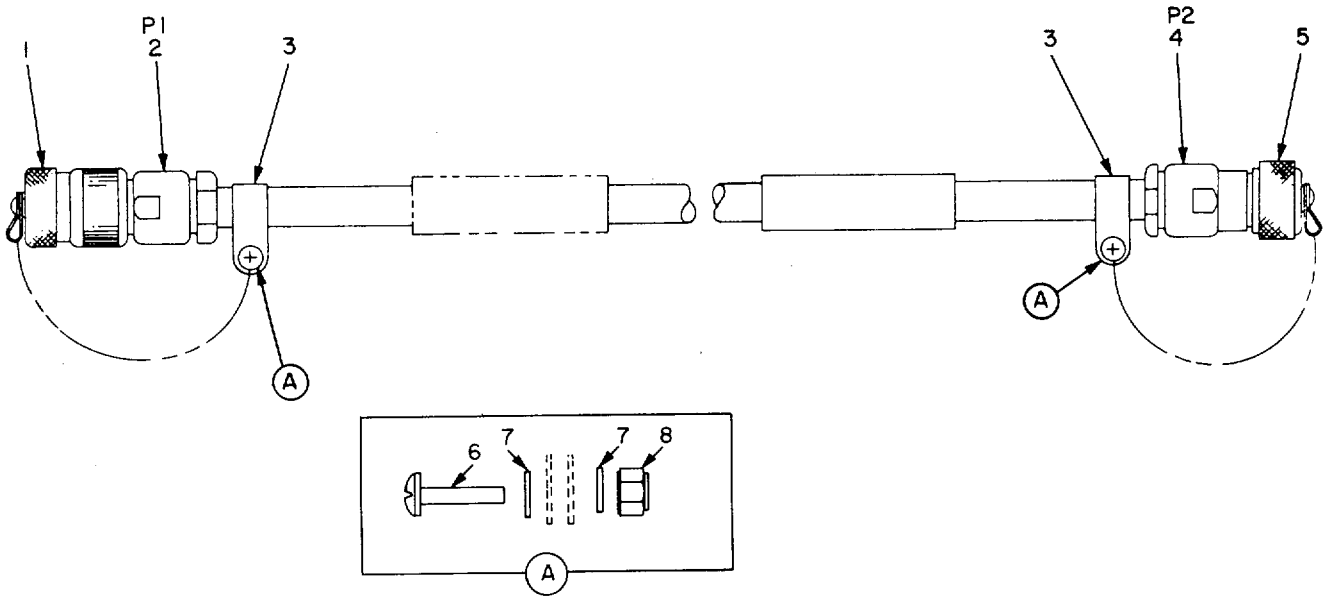
EL7NX105

SECTION II

TM 11-6625-2398-24P-4

(1) ILLUSTRATION		(2)	(3)	(4)	(5)	(6) DESCRIPTION	(7)	(8) QTY INC IN
(a) FIG NO.	(b) ITEM NO.	SMR CODE	NATIONAL STOCK NUMBER	FSCM	PART NUMBER	USABLE ON CODE	UNIT	
						GROUP 05 CABLE ASSEMBLY, POWER.ELECTRICAL (10FT)-1A1W2		
5	1	PAHZZ	5935-01-077-5347	96906	MS27467E17B65	CONNECTOR, PLUG, ELEC.....	EA	1
5	2	PAHZZ	5935-00-146-4526	96906	MS27506516-2	CLAMP, CABLE, ELECTRI.....	EA	1
5	3	XBHZZ		80063	SM-A-788003-16	SLEEVE, MARKER, CABLE.....	EA	2
<b>15</b>								





NOTE:  
PREFIX ALL REFERENCE DESIGNATIONS WITH 1A1W3  
OR 1A1W4

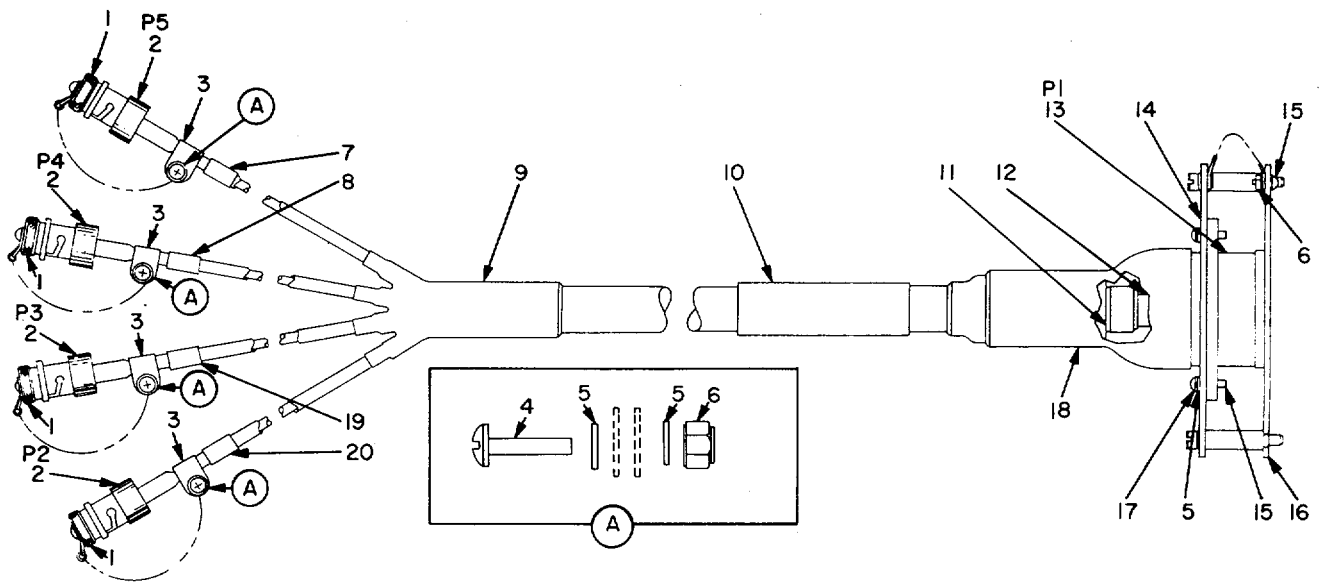
EL7NX106

Figure 6. Cable Assembly, Radio Frequency (6 Ft) -  
CG-3750/TPM-24(V)-1A1W3, 1A1W4

SECTION II

TM 11-6625-2398-24P-4

(1) ILLUSTRATION		(2)	(3)	(4)	(5)	(6) DESCRIPTION	(7)	(8) QTY INC IN
(a) FIG NO.	(b) ITEM NO.	SMR CODE	NATIONAL STOCK NUMBER	FSCM	PART NUMBER	USABLE ON CODE	UNIT	
						GROUP 06 CABLE ASSEMBLY,RADIO FREQUENCY (6FT) CG-3750/TPM-24(V) 1A1W3, 1A1W4		
6	1	PAHZZ	5935-01-137-5332	94375	3-N752	COVER, ELECTRICAL CO .....	EA	1
6	2	PAHZZ	5935-00-928-3127	81349	M39012/01-0005	CONNECTOR, PLUG, ELEC .....	EA	1
6	3	PAHZZ	5343-00-969-6501	80205	NAS1397R7	CLAMPLOOP .....	EA	2
6	4	PAHZZ	5935-00-938-1061	81349	M39012102-0003	CONNECTOR, PLUG, ELEC .....	EA	1
6	5	PAHZZ	5935-00-013-9972	94375	1-N752	COVER, ELECTRICAL C3.....	EA	1
6	6	PAHZZ	5305-00-054-5650	96906	MSSL957-16	SCREW, MACHINE .....	EA	2
6	7	PAHZZ	5310-00-782-1349	96906	MS15795-804	WASHER, FLAT.....	EA	4
6	8	PAHZZ	5313-00-982-4999	96906	MS21044C04	NUT, SELF-LOCKING, HE.....	EA	4
<b>17</b>								



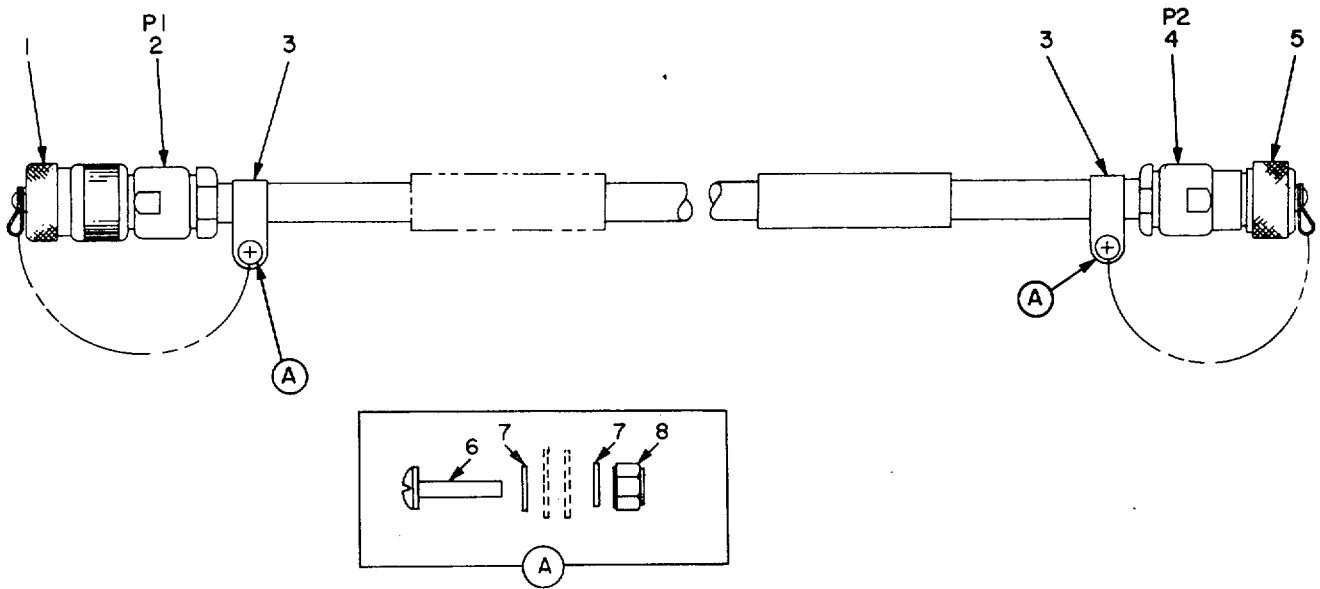
NOTE:  
 PREFIX ALL REFERENCE DESIGNATIONS WITH 1A1W5

EL7NX107

Figure 7. Cable Assembly, Radio Frequency (8 Ft)-1A1W5

SECTION II

(1) ILLUSTRATION		(2)	(3)	(4)	(5)	(6) DESCRIPTION	(7)	(8) QTY INC IN
(a) FIG NO.	(b) ITEM NO.	SMR CODE	NATIONAL STOCK NUMBER	FSCM	PART NUMBER	USABLE ON CODE	UNIT	
						GROUP 07 CABLE ASSEMBLY, RADIO FREQUENCY (8FT)-1A1W5		
7	1	XBHZZ		94375	3-8742	COVER, ELEC CONN.....	EA	4
7	2	PAHZZ	5935-00-938-7403	81413	172572-007	CONNECTOR, PLUG, ELEC.....	EA	4
7	3	PAHZZ	5340-00-619-7754	09922	HP-3N	CLAMP, LOOP.....	EA	4
7	4	PAHZZ	5305-00-054-5649	96906	MS51957-15	SCREW, MACHINE.....	EA	4
7	5	PAHZZ	5310-00-782-1349	96906	MS15795-804	WASHER, FLAT.....	EA	14
7	6	PAHZZ	5310-00-982-4999	96906	MS21044C04	NUT, SELF-LOCKING, HE.....	EA	5
7	7	XBHZZ		80063	SM-A-604426-5	SLEEVE, MARKER, CABLE.....	EA	1
7	8	XBHZZ		80063	SM-A-604426-4	SLEEVE, MARKER, CABLE.....	EA	1
7	9	PAHZZ	5970-00-110-1714	06090	562A022-4	INSULATION SLEEVING.....	EA	1
7	10	XBHZZ		80063	SM-A-604426-24	SLEEVE, MARKER, CABLE.....	EA	1
7	11	PAOZZ	5940-00-052-1207	59730	GSC590	FERRULE, METALLIC SH.....	EA	1
7	12	XBHZZ		59730	GS8430	FERRULE, METALLIC SH.....	EA	1
7	13	PAHZZ	5935-00-427-1974	98230	0N089559-1	CONNECTOR, RECEPTACL.....	EA	1
7	14	XBHZZ		80063	SM-C-604353	BRACKET ASSEMBLY.....	EA	1
7	15	PAHZZ	5305-00-054-5648	96906	MS5L957-14	SCREW, MACHINE.....	EA	7
7	16	XBHZZ	5935-00-001-4126	80063	SM-C-604354	COVER, ELECTRICAL CO.....	EA	1
7	17	PAHZZ	5310-00-933-8118	96906	MS35338-135	WASHER, LOCK.....	EA	6
7	18	PAHZZ	5970-00-110-1060	06090	202A174-4	INSULATION SLEEVING.....	EA	1
7	19	XBHZZ		80063	SM-A-604426-3	SLEEVE, MARKER, CABLE.....	EA	1
7	20	XBHZZ		80063	SM-A-604426-2	SLEEVE, MARKER, CABLE.....	EA	1
<b>19</b>								



NOTE:  
PREFIX ALL REFERENCE DESIGNATIONS WITH 1A1W6,  
1A1W7 OR 1A1W8.

EL7NX108

Figure 8. Cable Assembly, Radio Frequency (3 Ft)  
CG-3-3754/TPM-24(V)-1A1W6, 1A1W7, 1A1W8

SECTION II

TM 11-6625-2398-24P-4

(1) ILLUSTRATION		(2)	(3)	(4)	(5)	(6) DESCRIPTION	(7)	(8) QTY INC IN
(a) FIG NO.	(b) ITEM NO.	SMR CODE	NATIONAL STOCK NUMBER	FSCM	PART NUMBER	USABLE ON CODE	UNIT	
						GROUP 08 CABLE ASSEMBLY,RABIO FREQUENCY (3FT) CG-3754/TPN-24(V)-1A1W6, 1A1W7, 1A1W8		
8	1	XBHZZ	5935-00-013-9981	91836	878-2	COVER, ELECTRICAL CO .....	EA	1
8	2	PAHZZ	5935-01-041-3654	81349	M39012/57-4009	CONNECTOR, PLUG, ELEC .....	EA	1
8	3	PAHZZ	5340-00-619-7754	09922	HP-3N	CLAMP, LOOP .....	EA	2
8	4	PAHZZ	5935-00-624-7663	81349	M39012/55-4009	CONNECTOR, PLUG, ELEC .....	EA	1
B	5	XBHZZ	5935-00-013-9982	91836	878-1	COVER, ELECTRICAL CO .....	EA	1
8	6	PAHZZ	5305-00-054-6653	96906	MS51957-29	SCREW, MACHINE .....	EA	2
8	7	PAHZZ	5310-00-531-9514	81352	AN960C6	WASHER, FLAT .....	EA	5
8	8	PAHZZ	5310-00-982-6813	96906	MS21044C06	NUT, SELF- LOCKING, HE.....	EA	2
<b>21</b>								

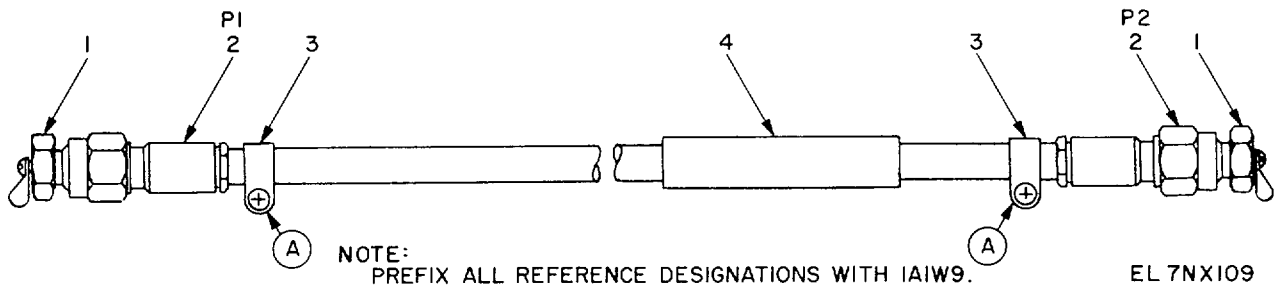
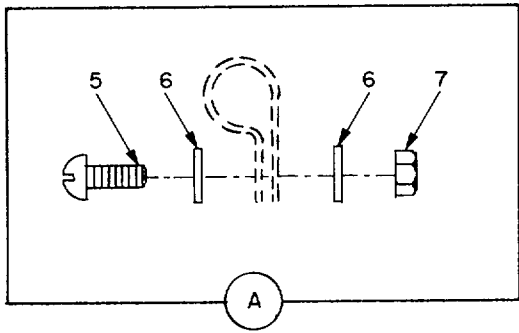


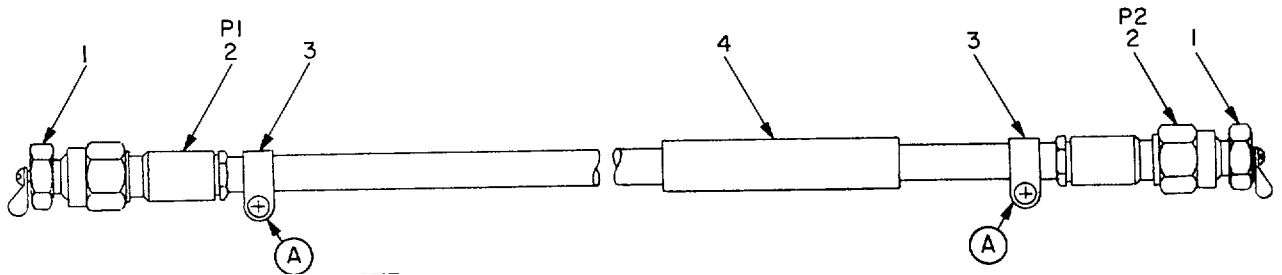
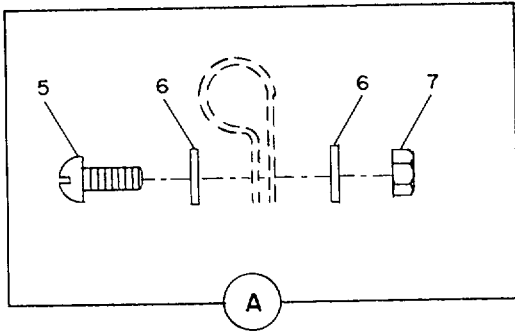
Figure 9. Cable Assembly, Radio Frequency (33.60 In.)-1A1W9

SECTION II

TM 11-6625-2398-24P-4

(1) ILLUSTRATION		(2)	(3)	(4)	(5)	(6) DESCRIPTION	(7)	(8) QTY INC IN
(a) FIG NO.	(b) ITEM NO.	SMR CODE	NATIONAL STOCK NUMBER	FSCM	PART NUMBER	USABLE ON CODE	UNIT	
						GROUP 09 CABLE ASSEMBLY, RADIO FREQUENCY (33.601N.)-1A1W9		
9	1	XBHZZ	5935-00-013-9982	91836	878-1	COVER, ELECTRICAL CO.....	EA	2
9	2	PAHZZ	5935-00-624-7663	81349	M39012155-4009	CONNECTOR, PLUG, ELE.....	EA	2
9	3	PAHZZ	5340-00-619-7754	09922	HP-3N	CLAMP, LOOP.....	EA	2
9	4	XBAZZ		80063	SM-A-604426-27	SLEEVE, MARKER, CABLE.....	EA	1
9	5	PAHZZ	5305-00-054-6653	96906	MS51957-29	SCREW, MACHINE.....	EA	2
9	6	PAHZZ	5310-00-531-9514	81352	AN960C6	WASHER, FLAT.....	EA	4
9	7	PAHZZ	5310-00-982-6813	96906	MS21044C06	NUT. SELF-LOCKING, HE.....	EA	2
<b>23</b>								





NOTE:  
PREFIX ALL REFERENCE DESIGNATIONS WITH 1A1W10

EL7NX10

Figure 10. Cable Assembly, Radio Frequency (34. 58 In. )-1A1W10

SECTION II

TM 11-6625-2398-24P-4

(1) ILLUSTRATION		(2)	(3)	(4)	(5)	(6) DESCRIPTION	(7)	(8) QTY INC IN
(a) FIG NO.	(b) ITEM NO.	SMR CODE	NATIONAL STOCK NUMBER	FSCM	PART NUMBER	USABLE ON CODE	UNIT	
						GROUP 10 CABLE ASSEMBLY, RADIO FREQUENCY (34.58 IN.) -1A1W10		
10	1	XBHZZ	5935-00-013-9982	91836	878-1	COVER, ELECTRICAL CO.....	EA	2
10	2	PAHZZ	5935-00-624-7663	81349	M39012/55-4009	CONNECTOR, PLUG,ELEC.....	EA	2
10	3	PAHZZ	5340-00-619-7754	09922	HP-3N	CLAMP, LOOP.....	EA	2
10	4	XBHZZ		80063	SM-A-604426-28	SLEEVE, MARKER, CABLE.....	EA	1
10	5	PAHZZ	5305-00-054-6653	96906	MS51957-29	SCREW, MACHINE.....	EA	2
10	6	PAHZZ	5310-00-531-9514	81352	AN960C6	WASHER, FLAT.....	EA	4
10	7	PAHZZ	5310-00-982-6813	96906	MS21044C06	NUT,SELF-LOCKING, HE.....	EA	2
<b>25</b>								

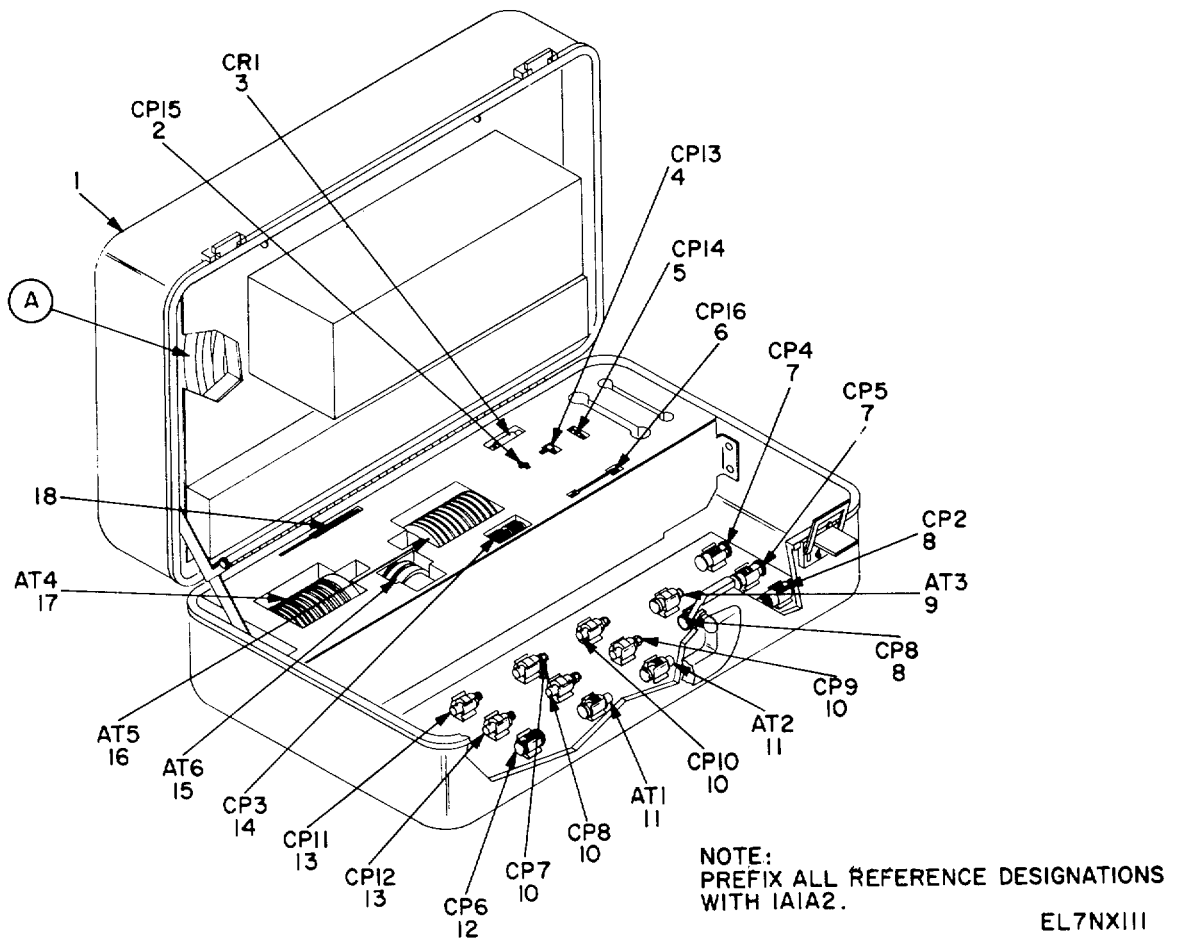
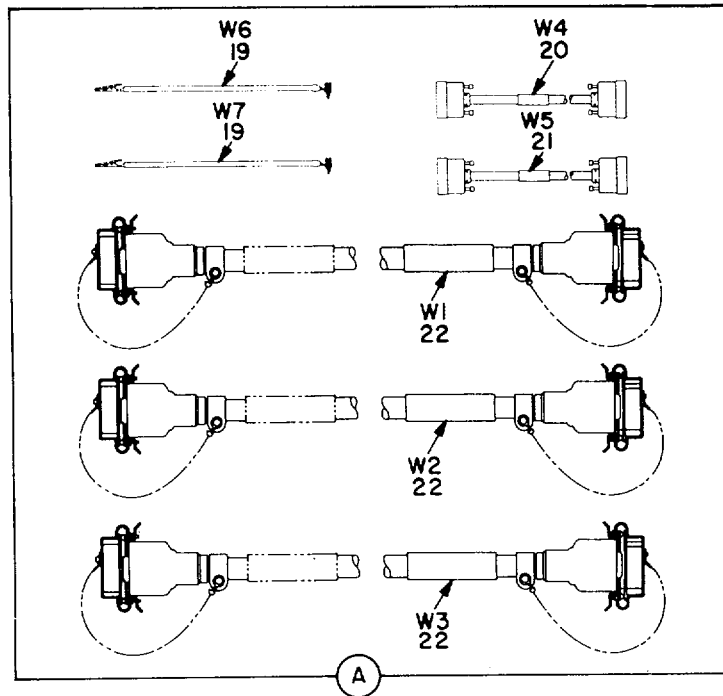
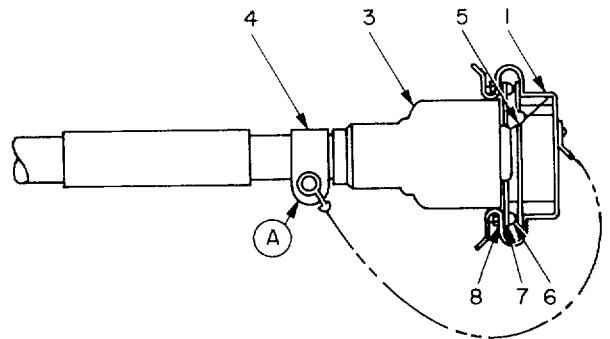
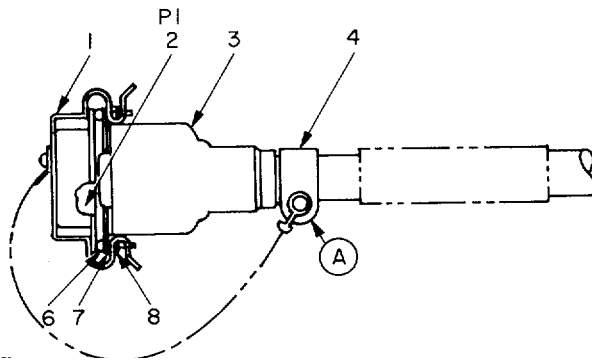
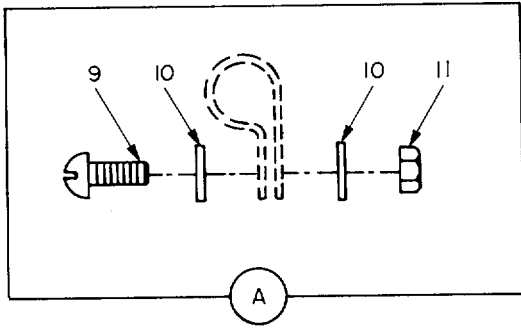


Figure 11. Case, Accessories CY-8014/TPM-24(V)-1A1A2

SECTION II

TM 11-6625-2398-24P-4

(1) ILLUSTRATION		(2)	(3)	(4)	(5)	(6) DESCRIPTION	(7)	(8) QTY INC IN
(a) FIG NO.	(b) ITEM NO.	SMR CODE	NATIONAL STOCK NUMBER	FSCM	PART NUMBER	USABLE ON CODE	UNIT	
						GROUP 11 CASE, ACCESSORIES CY-8014/TPM-24 (V) -1A1A2		
11	1	XBOZZ		80058	CY-8014/TPM-Z4(V)	CASE, ACCESSORBES.....	EA	1
11	2	PADZZ	5935-01-027-3130	26805	5080-0000-09	ADAPTER, CONNECTOR .....	EA	1
11	3	PAOZZ	6625-01-080-2791	80058	CV-3747/TPM-24 (V)	DETECTOR, RADIO FRE .....	EA	1
11	4	PAOZZ	5935-01-159-0746	80058	MX-1041/TPM-24(V)	ADAPTER CONNECTOR .....	EA	1
11	5	PAOZZ	5935-00-599-6321	80058	MX-10410/TPM-24(V)	ADAPTER, CONNECTOR .....	EA	1
11	6	PAOZZ	5935-01-152-0500		MX-10408/TPM-24(V)	ADAPTER, CONNECTOR .....	EA	1
11	7	PAOZZ	5935-00-681-5013	81349	M55339/15-00491	ADAPTER, CONNECTOR .....	EA	2
11	8	PAOZZ	5935-01-035-5650	81349	M55339/07-0029	ADAPTER, CONNECTOR .....	EA	2
11	9	PAOZZ		80058	DA-559/TPM-24(V)	DUMMY LOAD .....	EA	1
11	10	PAOZZ	5935-01-062-3397		UG-1896/TPM-24(V)	ADAPTER, CONNECTOR .....	EA	4
11	11	PAOZZ	5985-00-861-7856	80058	DA-558/TPM-24(V)	DUMMY LOAD, ELECTRIC .....	EA	2
11	12	PAOZZ	5935-00-204-5098	81349	M55339/18-01034	ADAPTER, CONNECTOR .....	EA	1
11	13	PAOZZ	5935-01-062-3398		UG-1897/TPM-24(V)	ADAPTER, CONNECTOR .....	EA	2
11	14	PAOZZ		81349	UG-57B/U	ADAPTER, CONNECTOR .....	EA	1
11	15	PAOZZ	5935-01-163-6247	80058	J-3984/TPM-24(V)	SHORTING PLUG ASSY .....	EA	1
11	16	PAOZZ	6625-00-006-7691	80058	DA-635/U	DUMMY LOAD, ELECTRIC .....	EA	1
11	17	PAOZZ	6625-00-006-7690	80058	DA-634/U	DUMMY LOAD, ELECTRIC .....	EA	1
11	18	PAOZZ	5120-01-138-4400	91293	8771	SCREWDRIVER, CAPACIT .....	EA	1
1i	19	XBOZZ	6625-00-366-9215	80063	SM-B-604411	STRAP ASSEMBLY, GROU.....	EA	2
11	20	PAOZZ	5995-01-152-0503	80063	SM-D-986530	CABLE ASSEMBLY, .SPEC.....	EA	1
11	21	PAOZZ	5995-01-152-0504	80063	SM-D-986531	CABLE ASSEMBLY, SPEC.....	EA	1
11	22	PAOHH	6625-00-008-7437	80058	CX12916TPM24V	CABLE ASSEMBLY, SPEC.....	EA	3



NOTE:

PREFIX ALL REFERENCE DESIGNATIONS WITH 1A1A2W2, 1A1A2W2 OR 1A1A2W3.

Figure 12. Cable Assembly Special Purpose, Electrical (2 Ft)  
 CX-12916/TPM-24 (V) -1A1A2W1, 1A1A2W2, 1A1A2W3

SECTION II

TM 11-6625-2398-24P-4

(1) ILLUSTRATION		(2)	(3)	(4)	(5)	(6) DESCRIPTION	(7)	(8) QTY INC IN
(a) FIG NO.	(b) ITEM NO.	SMR CODE	NATIONAL STOCK NUMBER	FSCM	PART NUMBER	USABLE ON CODE	UNIT	
						GROUP 1101 CABLE ASSEMBLY, SPECIAL PURPOSE ELECTRICAL (2FT) CX-12916/TPM- 24(V)-1A1AZW1, 1A1A2W2, 1A1AW3		
12	1	XBHZZ	5935-00-001-4127	80063	SM-8-604413	COVER, ELECTRICAL CO .....	EA	2
12	2	PAHZZ	5935-00-410-9250	81349	M24308/2-3	CONNECTOR, RECEPTACL.....	EA	1
12	3	PAOZZ	5970-00-110-1712	06090	214A332-4	INSULATION SLEEVE.....	EA	2
12	4	PAHZZ	5340-00-336-8164	09922	HP-10N	CLAMP, LOOP .....	EA	2
12	5	PAHZZ	5935-00-489-9999	81349	M24308/4-3	CONNECTOR, RECEPTACL.....	EA	1
12	6	PAHZZ	5305-00-054-5653	96906	MS5195T-19	SCREW, MACHINE .....	EA	4
12	7	PAHZZ	5310-00-933-8118	96906	MS35338-135	WASHER, LOCK .....	EA	4
12	8	PAHZZ	5310-00-208-3786	80205	NAS671C4	NUT, PLAIN, HEXAGON.....	EA	4
12	9	PAHZZ	5305-00-054-5650	96906	MS51957-16	SCREW, MACHINE .....	EA	2
12	10	PAHZZ	5310-00-782-1349	96906	MS15795-804	WASHER, FLAT .....	EA	4
12	11	PAHZZ	5310-00-982-4999	96906	MS21044C04	NUT, SELF-LOCKING, HE.....	EA	2
<b>29</b>								

## NATIONAL STOCK NUMBER AND PART NUMBER INDEX

STOCK NUMBER	FIGURE NO.	ITEM NO.	STOCK NUMBER	FIGURE NO.	ITEM NO.
5935-00-001-4126	7	16	5310-00-782-1349	2	32
5935-00-001-4127	12	1	5310-00-782-1349	6	7
5340-00-003-9207	2	33	5310-00-782-1349	7	5
6625-00-006-7690	11	17	5310-00-782-1349	12	10
6625-00-006-7691	11	16	5340-00-840-0954	2	29
6625-00-006-7692	1	4	5985-00-856-3283	2	16
6625-00-006-9732	1	3	5985-00-861-7856	11	11
6625-00-008-7437	11	22	5985-00-893-1773	2	17
5935-00-013-9972	6	5	5935-00-904-4050	2	41
5935-00-013-9981	8	1	5935-00-928-3127	6	2
5935-00-013-9982	8	5	5310-00-929-6395	2	31
5935-00-013-9982	9	1	5310-00-933-8118	3	10
5935-00-013-9982	10	1	5310-00-933-8118	7	17
5940-00-052-1207	7	11	5310-00-933-8118	12	7
5305-00-054-5648	7	15	5310-00-933-8119	2	14
5305-00-054-5649	2	3	5310-00-933-8120	2	22
5305-00-054-5649	7	4	5310-00-934-9748	3	9
5305-00-054-5650	2	4	5935-00-938-1061	6	4
5305-00-054-5650	6	6	5935-00-938-7403	7	2
5305-00-054-5650	12	9	5305-00-958-2918	2	19
5305-00-054-5652	3	1	5340-00-969-6501	6	3
5305-00-054-5653	12	6	5310-00-982-4999	2	27
5305-00-054-6652	2	9	5310-00-982-4999	6	8
5305-00-054-6653	8	6	5310-00-982-4999	7	6
5305-00-054-6653	9	5	5310-00-982-4999	12	11
5305-00-054-6653	10	5	5310-00-982-6813	2	20
5305-00-054-6654	2	10	5310-00-982-6813	8	8
5305-00-054-6656	2	1	5310-00-982-6813	9	7
5305-00-054-6670	2	21	5310-00-982-6813	10	7
5305-00-054-6670	2	30	5310-00-982-6814	2	24
5305-00-054-6674	2	13	5935-01-027-3130	11	2
5310-00-057-0573	3	2	5935-01-033-9639	2	36
5970-00-110-1060	7	18	5935-01-035-5650	11	8
5970-00-110-1712	12	3	5935-01-041-3654	8	2
5970-00-110-1714	7	9	5935-01-062-3397	11	10
5935-00-146-4526	5	2	5935-01-062-3398	11	13
5935-00-154-4000	3	8	5995-01-062-7921	1	13
5935-00-156-0253	3	3	5995-01-063-7188	1	8
5935-00-163-3652	4	2	5985-01-069-9911	1	1
5310-00-167-0801	2	23	5935-01-077-5347	5	1
5935-00-173-4853	3	4	6625-01-080-2791	11	3
5935-00-204-5098	11	12	4010-01-114-0010	2	5
5310-00-208-3786	12	8	5999-01-124-9697	1	5
5995-00-235-5047	2	35	5935-01-137-5332	6	1
5340-00-336-8164	12	4	5120-01-138-4400	11	18
6625-00-366-9215	11	19	5995-01-152-0497	1	9
5935-00-410-9250	12	2	5995-01-152-0498	1	10
5935-00-427-1974	7	13	5935-01-152-0500	11	6
5935-00-477-8166	4	1	5995-01-152-0502	1	7
5935-00-489-9999	12	5	5995-01-152-0503	11	20
5310-00-531-9514	2	2	5995-01-152-0504	11	21
5310-00-531-9514	8	7	5995-01-155-4259	1	12
5310-00-531-9514	9	6	5995-01-155-4260	1	11
5310-00-531-9514	10	6	5995-01-157-1836	3	7
5935-00-599-6321	11	5	5995-01-157-1839	2	40
5340-00-619-7754	7	3	5995-01-157-1840	2	43
5340-00-619-7754	8	3	5999-01-158-9127	3	5
5340-00-619-7754	9	3	5995-01-158-9295	2	26
5340-00-619-7754	10	3	5935-01-159-0746	11	4
5935-00-624-7663	8	4	5340-01-162-5886	2	42
5935-00-624-7663	9	2	5935-01-163-6247	11	15
5935-00-624-7663	10	2	5340-01-164-2407	2	18
5935-00-681-5013	11	7	6625-01-175-5130	3	6
5310-00-685-3744	2	15			

FSCM	PART NUMBER	FIGURE NO.	ITEM NO.	FSCM	PART NUMBER	FIGURE NO.	ITEM NO.
88044	AN960C10	2	23	80058	CV-3747/TPM-241V)	11	3
81352	AN960C6	2	2	80058	CX12916TPM24V	11	22
81352	AN960C6	8	7	80058	CY-8014/TPM-24(V)	11	1
81352	AN960C6	9	6	80058	CY-8015/TPM-24(V)	1	14
81352	AN960C6	10	6	80058	DA-558/TPM-24(V)	11	11
88044	AN960C8	2	15	80058	DA-559/TPM-24(V)	11	9
12457	AU-46A1NC1	2	25	80058	DA-634/U	11	17
80058	CG-3750/TPM-24(V) (6FT 0IN)	1	8	80058	DA-635/U	11	16
80058	CG-3754/TPM-24(V) (13FT 0IN)	1	13	80058	DA-636/U	1	4
80058	CG409HU61N	2	35	59730	GSB430	7	12
80058	CN-1322A/TPM-24(V)	1	1	59730	GSC590	7	11

## SECTION IV

TM 11-6624-2398-24P-4

## NATIONAL STOCK NUMBER AND PART NUMBER INDEX

FSCM	PART NUMBER	FIGURE NO.	ITEM NO.	FSCM	PART NUMBER	FIGURE NO.	ITEM NO.
09922	HP-10N	12	4	81349	M55339/07-00029	11	8
09922	HP-3N	7	3	81349	M55339/15-00491	11	7
09922	HP-3N	8	3	81349	M55339/18-01034	11	12
09922	HP-3N	9	3	80205	NAS2010C6B16A	2	34
09922	HP-3N	10	3	80205	NAS1201C6C24	2	5
09922	HP-4N	2	33	80205	NAS1397R7	6	3
80058	J-3984/TPM-24(V)	11	15	80205	NAS671C4	12	8
96906	MS15795-804	2	32	80063	SM-A-604426-2	7	20
96906	MS15795-804	6	7	80063	SM-A-604426-24	7	10
96906	MS15795-804	7	5	80063	SM-A-604426-27	9	4
96906	MS15795-804	12	10	80063	SM-A-604426-28	10	4
96906	MS21044C04	2	27	80063	SM-A-604426-3	7	19
96906	MS21044C04	6	8	80063	SM-A-604426-4	7	8
96906	MS21044C04	7	6	80063	SM-A-604426-5	7	7
96906	MS21044C04	12	11	80063	SM-A-788003-15	4	3
96906	MS21044C06	2	20	80063	SM-A-788003-16	5	3
96906	MS21044C06	8	8	80063	SM-B-604411	1L	19
96906	MS21044C06	9	7	80063	SM-B-604413	12	1
96906	MS21044C06	10	7	80063	SM-B-604419	3	6
96906	MS21044C08	2	24	80063	SM-B-604421	3	7
96906	MS24693-C26	2	19	80063	SM-B-604425	3	5
96906	MS27467E17B6S	5	1	80063	SM-B-604501	2	11
96906	MS27467E218115	4	1	80063	SM-C-604305	2	6
96906	MS27506816-2	5	2	80063	SM-C-604353	7	14
96906	MS27506820-2	4	2	80063	SM-C-604354	7	16
96906	MS35338-135	3	10	80063	SM-C-687969	2	8
96906	4535338-135	7	17	80063	SM-C-687970	2	39
96906	MS35338-135	12	7	80063	SN-C-688010	2	38
96906	MS35338-136	2	31	80063	SM-C-688011-1	2	40
96906	MS35338-137	2	14	80063	SM-C-688011-2	2	43
96906	MS35338-138	2	22	80063	SM-C-688013	2	26
96906	MS35649-244	3	9	80063	SM-C-688016	2	12
96906	MS39087-4	2	29	80063	SM-D-604303	2	37
96906	MS51957-14	7	15	80063	SM-D-604428-2	2	7
96906	MS51957-15	2	3	80063	SM-D-604428-8	1	6
96906	MS51957-15	7	4	80063	SM-D-787808	1	9
96906	MS51957-16	2	4	80063	SM-D-787809	1	10
96906	MS51957-16	6	6	80063	SM-D-986521	1	2
96906	MS51957-16	12	9	80063	SM-D-986522	1	7
96906	MS51957-18	3	1	80063	SM-D-986530	11	20
96906	MS51957-19	12	6	80063	SM-D-986531	11	21
96906	MS51957-28	2	9	80063	SM-D-986535	1	11
96906	MS51957-29	8	6	80063	SM-D-986536	1	12
96906	MS51957-29	9	5	84971	TA514-D-12-12	2	18
96906	MS51957-29	10	5	84971	TA514-D-16-12	2	42
96906	MS51957-30	2	10	80058	UG-1896/TPM-24(V)	11	10
96906	MS51957-32	2	1	80058	UG-1897/TPM-24(V)	11	13
96906	MS51957-45	2	21	81349	UG-578/U	11	14
96906	MS51957-45	2	30	81349	UG-606/U	2	28
96906	MS51957-49	2	13	98230	0N089559-1	7	13
80058	MX-10408/TPM-24(V)	11	6	94375	1-N752	6	5
80058	MX-10410/TPM-24(V)	11	5	81413	172572-007	7	2
80058	MX-10411/TPM-24(V)	11	4	06090	202A174-4	7	18
80058	MX-10412/TPM-24(V)	1	5	06090	214A332-4	12	3
80058	MX-9356/TPM-24(V)	1	3	94375	3-B742	7	1
19178	M10990	2	44	94375	3-N752	6	1
81349	M21097/13-05	3	3	80249	330764	2	16
81349	M21097/15-13	3	8	99899	370BNM	2	17
81349	M24308/2-3	12	2	71279	450-3704-01-03	3	4
81349	M2430814-3	12	5	26805	5080-0000-09	11	2
81349	M39012/01-0005	6	2	06090	562A022-4	7	9
81349	M39012/02-0003	6	4	91293	8771	11	18
81349	M39012/55-4009	8	4	91836	878-1	8	5
81349	M39012/55-4009	9	2	91836	878-1	9	1
81349	M39012/55-4009	10	2	91836	878-1	10	1
81349	M39012/57-4009	8	2	91836	878-2	8	1
81349	M55339/03-00027	2	41	88769	91921002	3	2
81349	M55339/04-00030	2	36				

31/(32 BLANK)



By Order of the Secretary of the Army:

Official:

ROBERT M. JOYCE  
*Major General, United States Army*  
*The Adjutant General*

JOHN A. WICKHAM JR.  
*General, United States Army*  
*Chief of Staff*

Distribution:

To be distributed in accordance with special list.

RECOMMENDED CHANGES TO EQUIPMENT TECHNICAL PUBLICATIONS



THEN... JOT DOWN THE  
DOPE ABOUT IT ON THIS  
FORM, CAREFULLY TEAR IT  
OUT, FOLD IT AND DROP IT  
IN THE MAIL!

**SOMETHING WRONG WITH THIS PUBLICATION?**

FROM: (PRINT YOUR UNIT'S COMPLETE ADDRESS)

DATE SENT

PUBLICATION NUMBER

PUBLICATION DATE

PUBLICATION TITLE

BE EXACT... PIN-POINT WHERE IT IS

PAGE  
NO.

PARA-  
GRAPH

FIGURE  
NO.

TABLE  
NO.

IN THIS SPACE TELL WHAT IS WRONG  
AND WHAT SHOULD BE DONE ABOUT IT:

TEAR ALONG PERFORATED LINE

PRINTED NAME, GRADE OR TITLE, AND TELEPHONE NUMBER

SIGN HERE:

